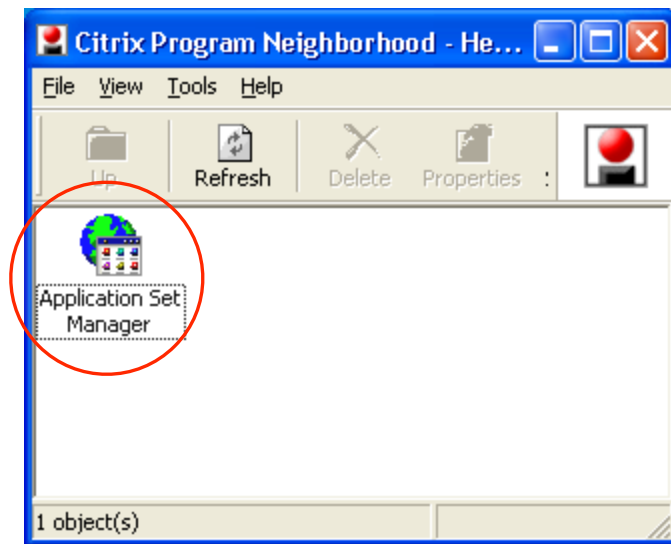
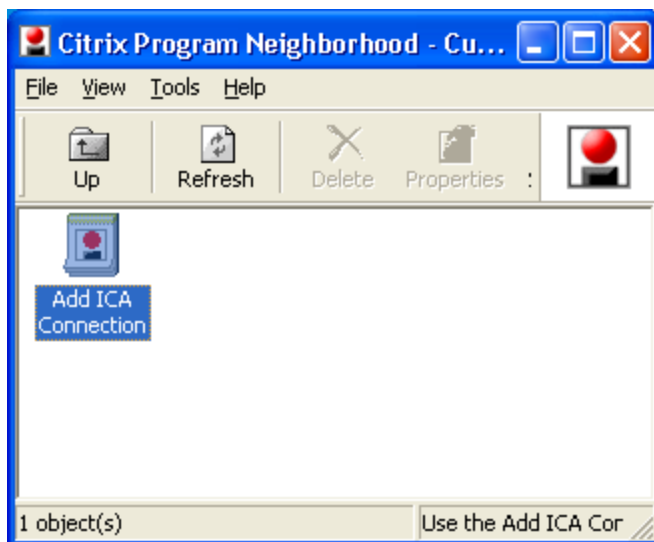
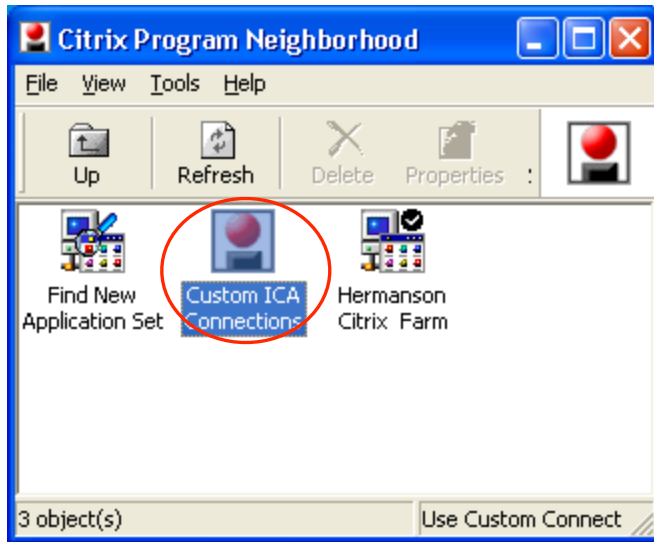


Setting up Citrix on remote computers:

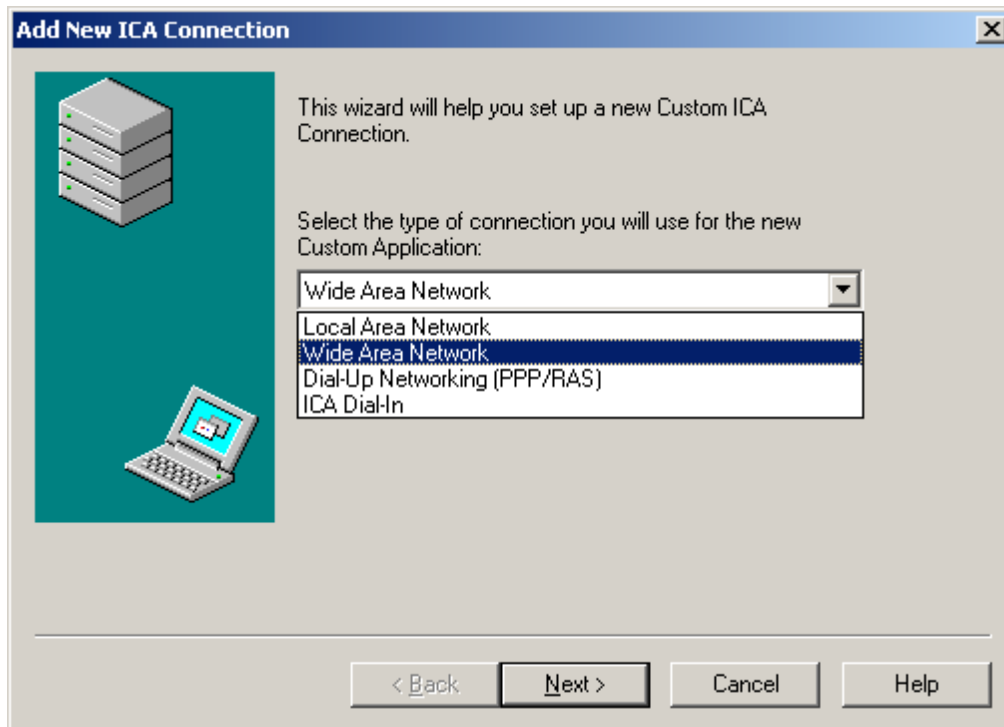
Note: This setup is intended for offsite (remote) PCs only! Completing this procedure requires you to be offsite. **A remote connection cannot be completed in the office!** Copy this document to your desktop and perform the setup off-site. Local users please refer to the following document: [Citrix Local Setup.doc](#).

1. Has the client application been installed on your machine? (There will be a 'Citrix Program Neighborhood' icon on your desktop.) If yes, skip down to step 3. If not you'll need to first install the software. You'll find a copy at [U:\0_shared_apps\citrix client](U:\0_shared_apps\citrix_client).
2. Once you've downloaded the application, run it. Keep all the defaults and just keep hitting 'next' until the installation completes.
3. Double-click the Citrix Program Neighborhood icon. Double-click the circled icons until you see the **Add ICA Connection**:

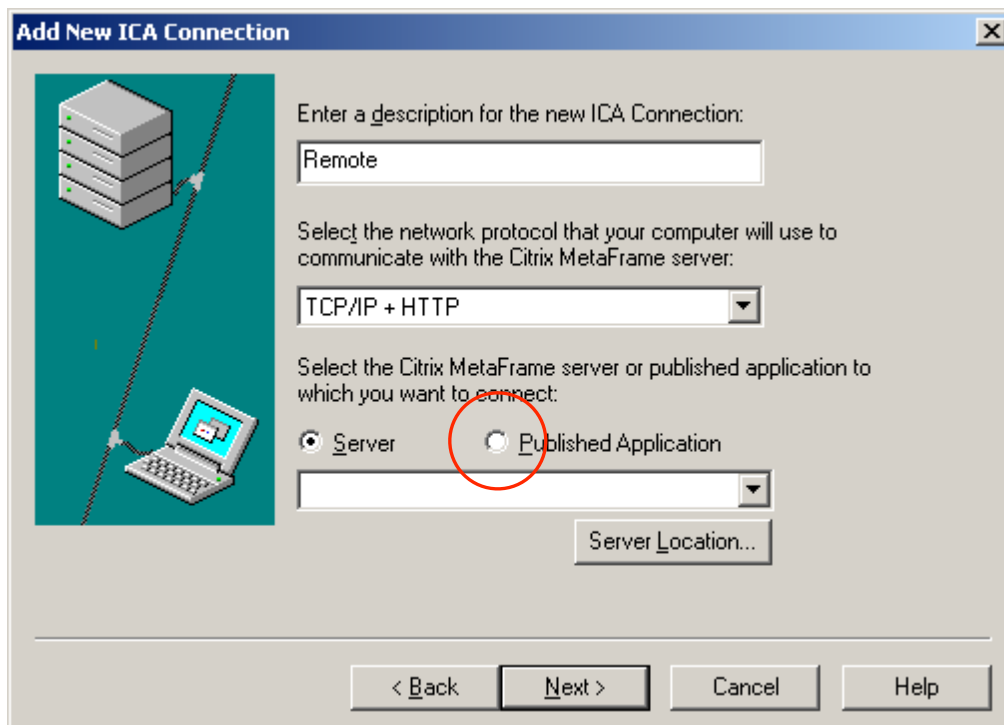




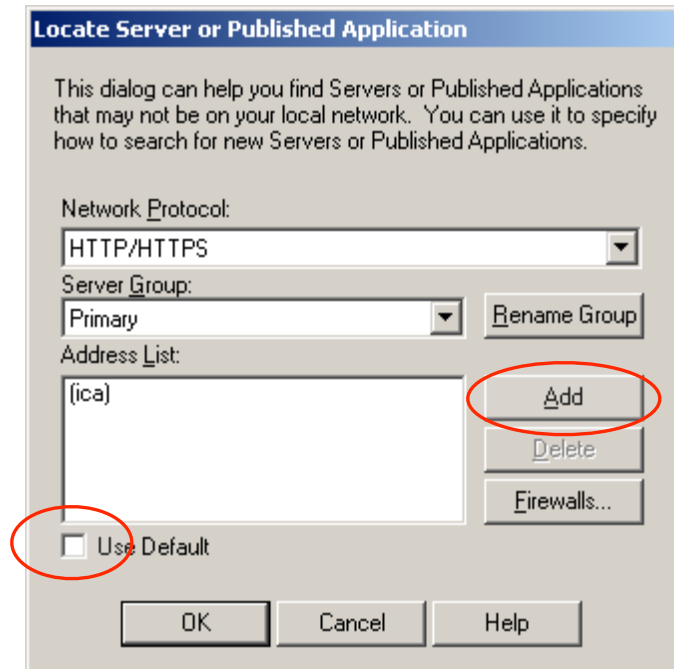
4. Double-click the **Add ICA Connection** to start the new connection wizard.



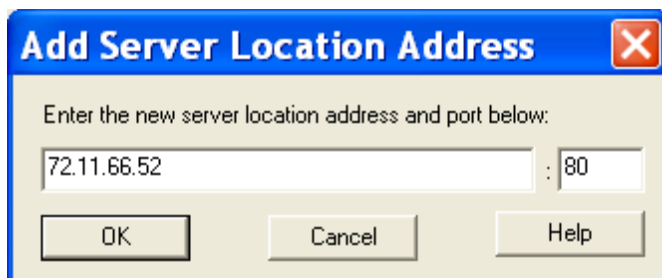
5. Select **Wide Area Network**. Hit Next.
6. Enter **REMOTE** in the top field and make sure the middle field is **TCP/IP + HTTP**:



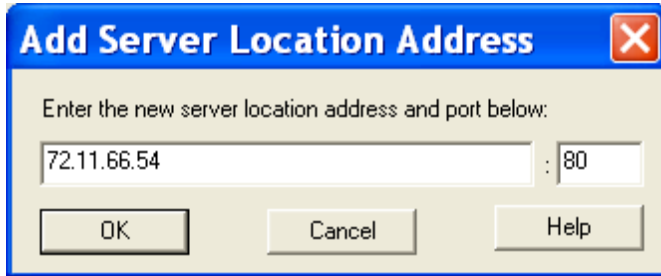
7. For the bottom field, select **Published Application** and click the **Server Location** button. The following window will appear:



8. Uncheck the **Use Default** button and click **Add**.



9. Type in the number shown above **72.11.66.52** and click **OK**
10. Click the **Add** button again and add a second address of **72.11.66.54** as shown:



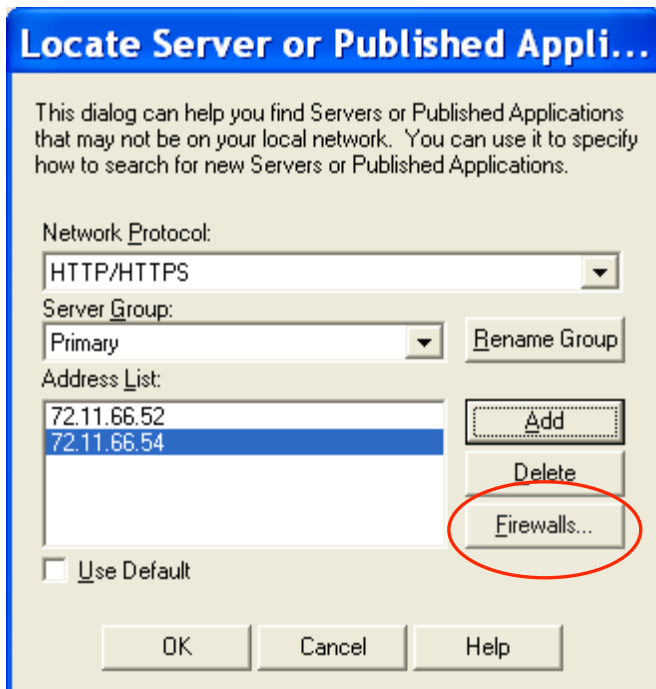
Add Server Location Address ✕

Enter the new server location address and port below:

72.11.66.54 : 80

OK Cancel Help

11. Click **OK** and you should see this:



Locate Server or Published Appli...

This dialog can help you find Servers or Published Applications that may not be on your local network. You can use it to specify how to search for new Servers or Published Applications.

Network Protocol: HTTP/HTTPS

Server Group: Primary Rename Group

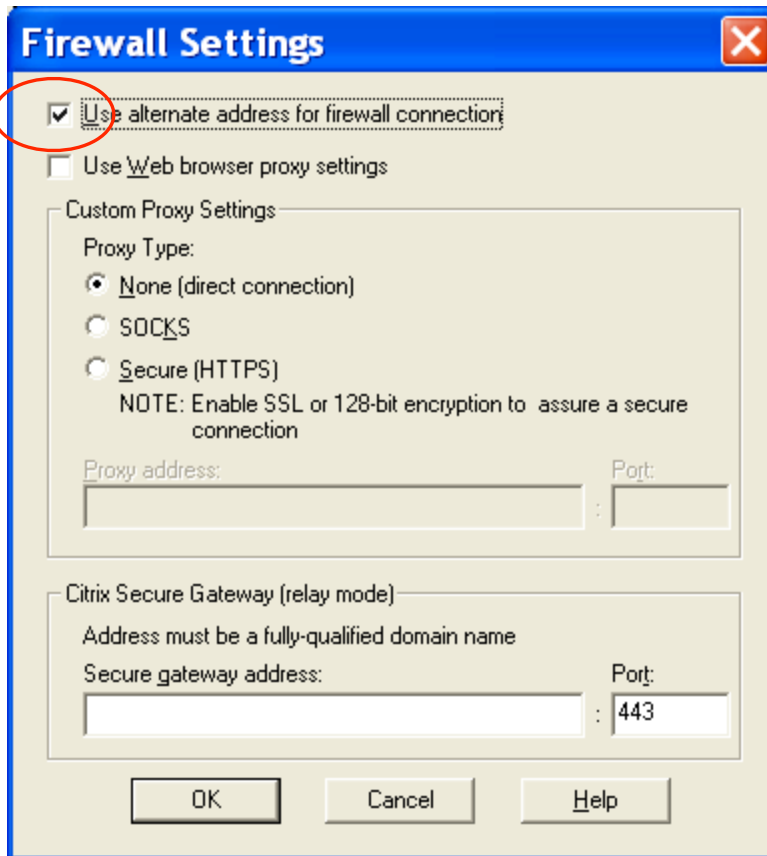
Address List:

72.11.66.52	Add Delete Firewalls...
72.11.66.54	

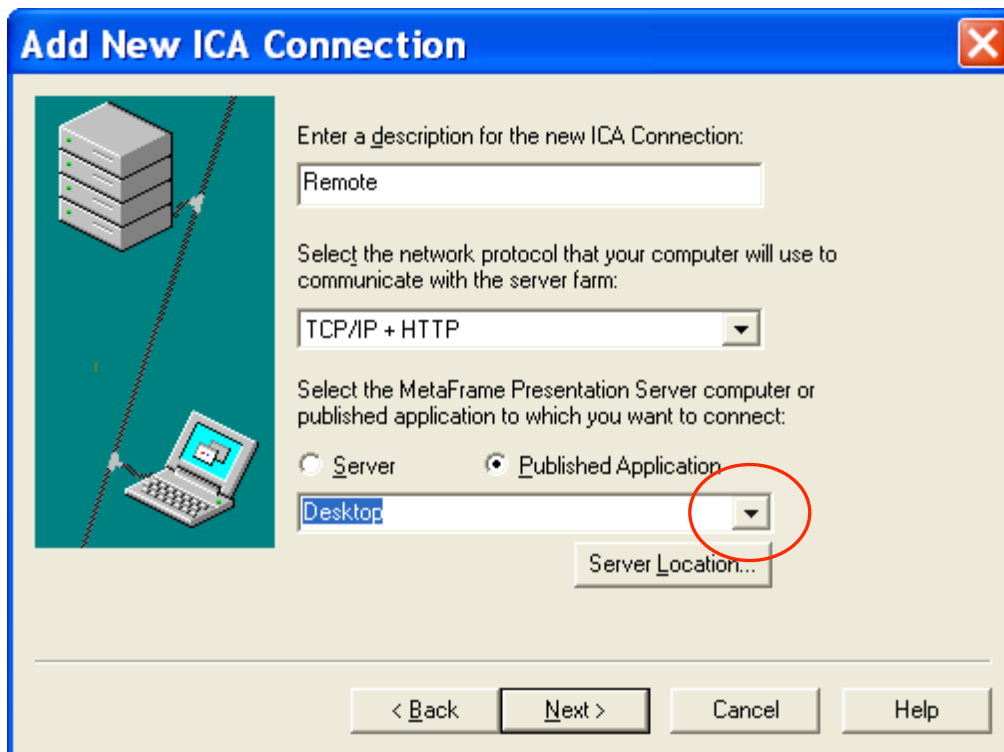
Use Default

OK Cancel Help

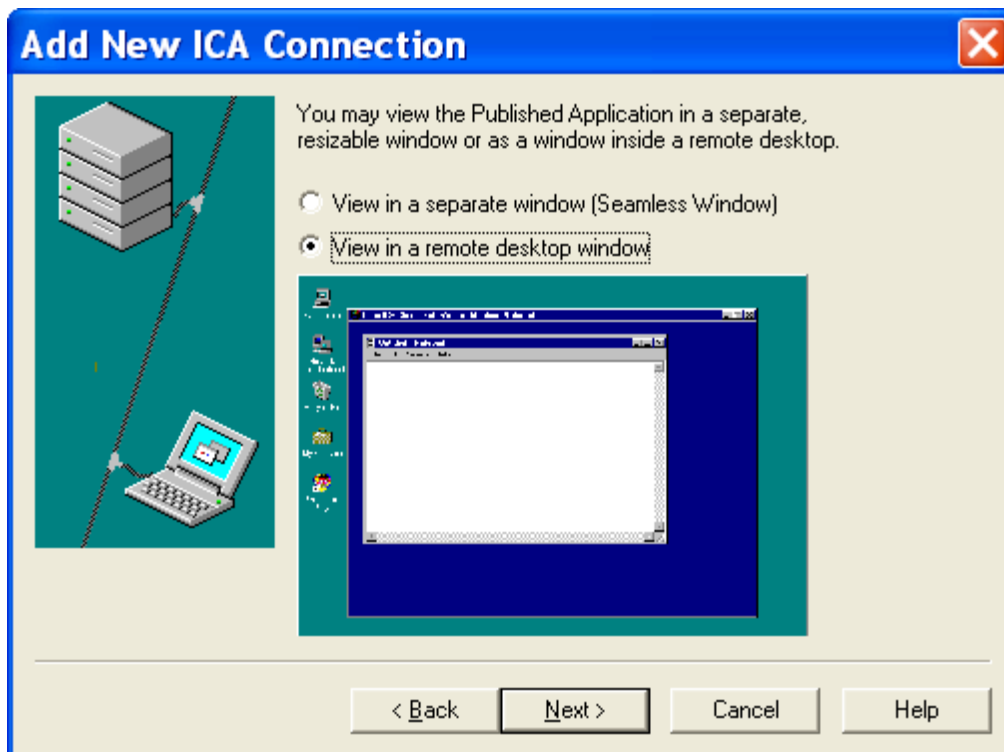
12. Click the **Firewalls** button and check the very first box **Use alternate address for firewall connection**:



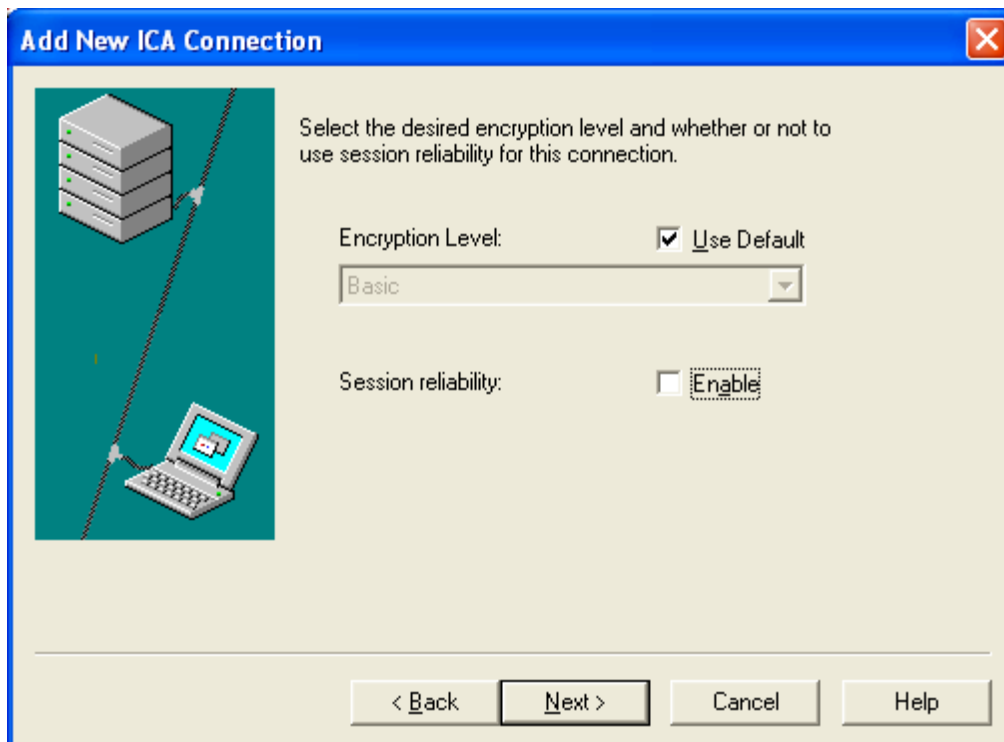
13. Click **OK** twice to get back to this screen:



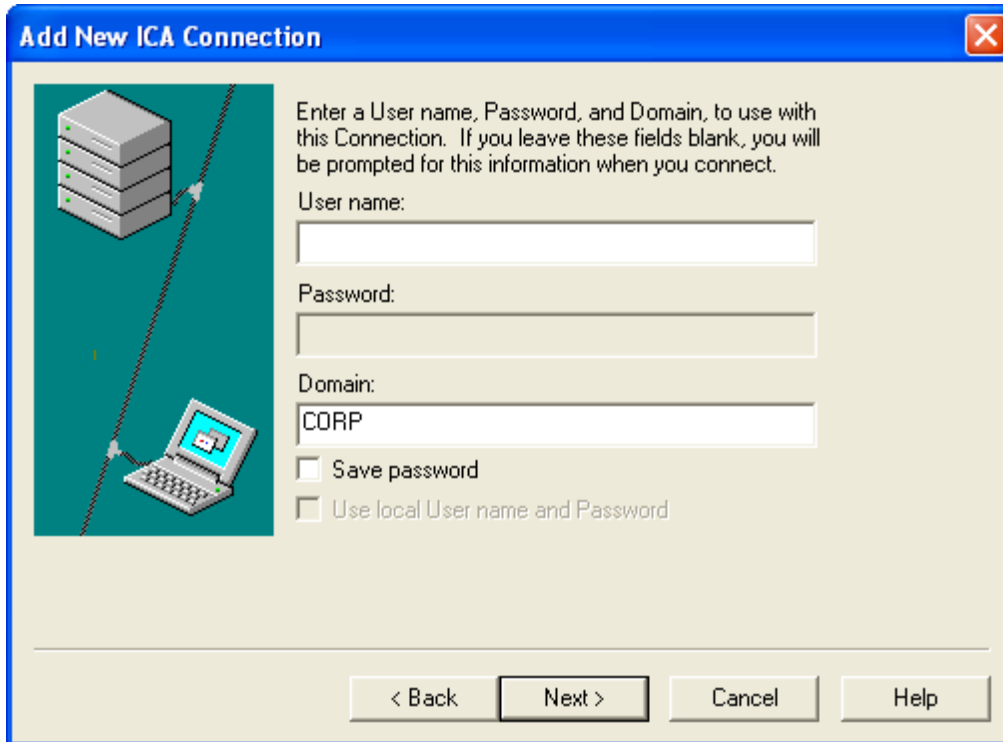
14. Click the down arrow (shown above) for a drop-down list of available applications. (May take a few seconds for list to populate). Select **Desktop** and click **Next**.
15. Choose the second option at this box and hit **Next**.



16. Uncheck **Session reliability** and click **Next**



17. Enter the domain as **CORP** and click **Next**:



Add New ICA Connection

Enter a User name, Password, and Domain, to use with this Connection. If you leave these fields blank, you will be prompted for this information when you connect.

User name:

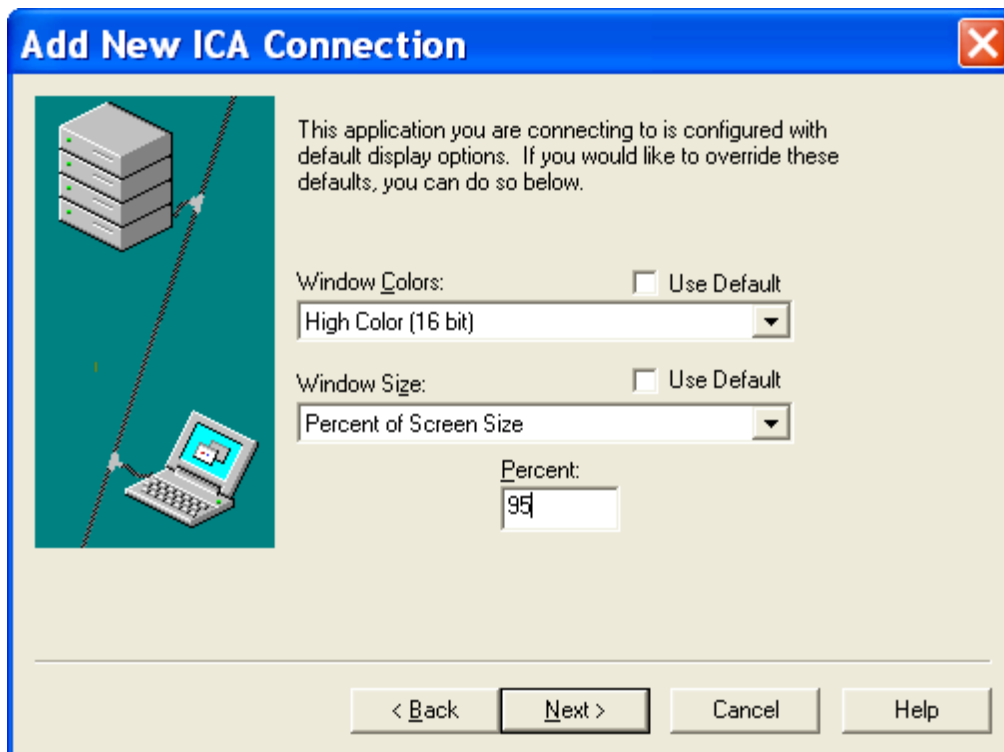
Password:

Domain:

Save password
 Use local User name and Password

< Back Next > Cancel Help

18. Uncheck both boxes and choose the options shown below:



19. Click **Next** then **Finish**. Your new connection is now complete.

