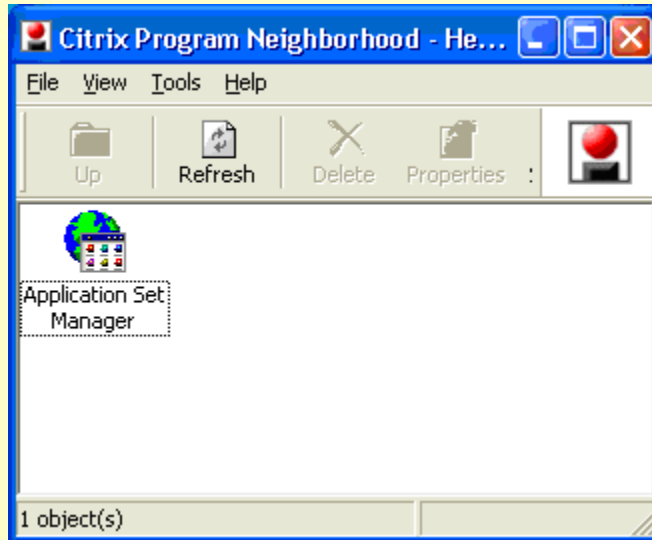


Setting Up and Using Citrix Remotely

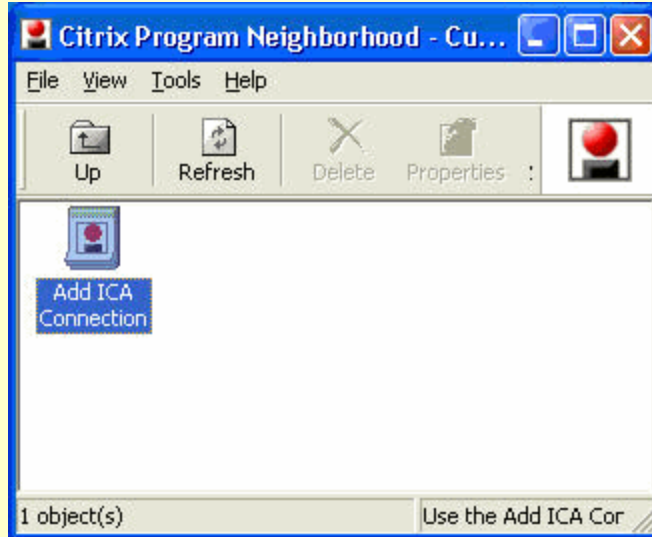
Launch Citrix Program Neighborhood and double-click **Application Set Manager...**



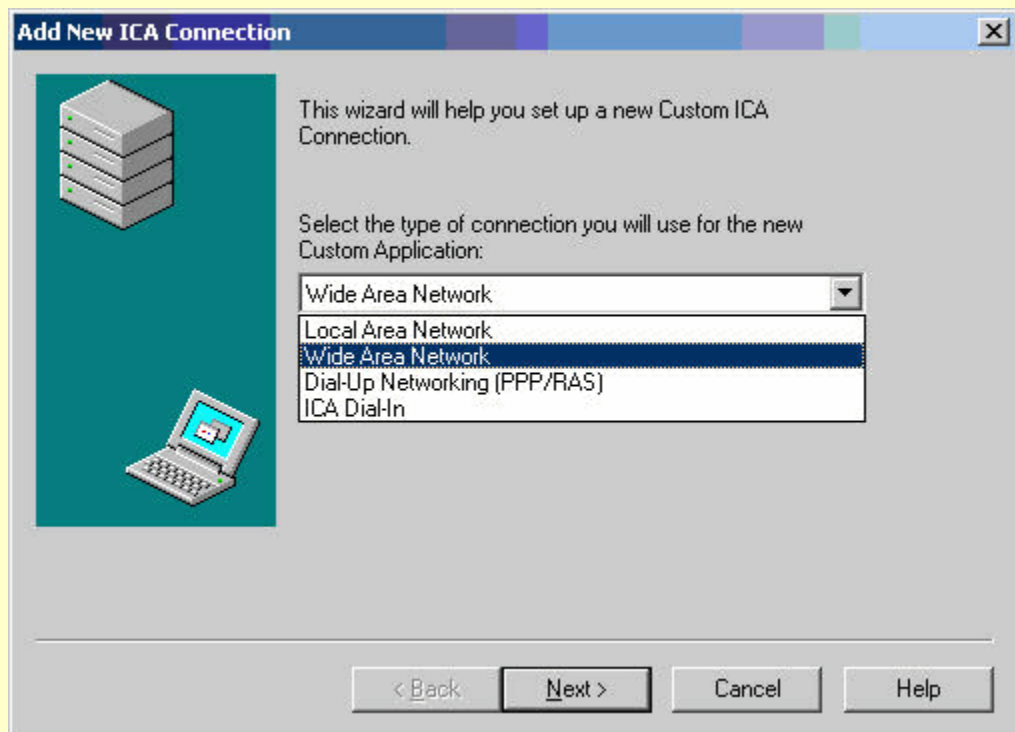
Double-click **Custom ICA Connections...**



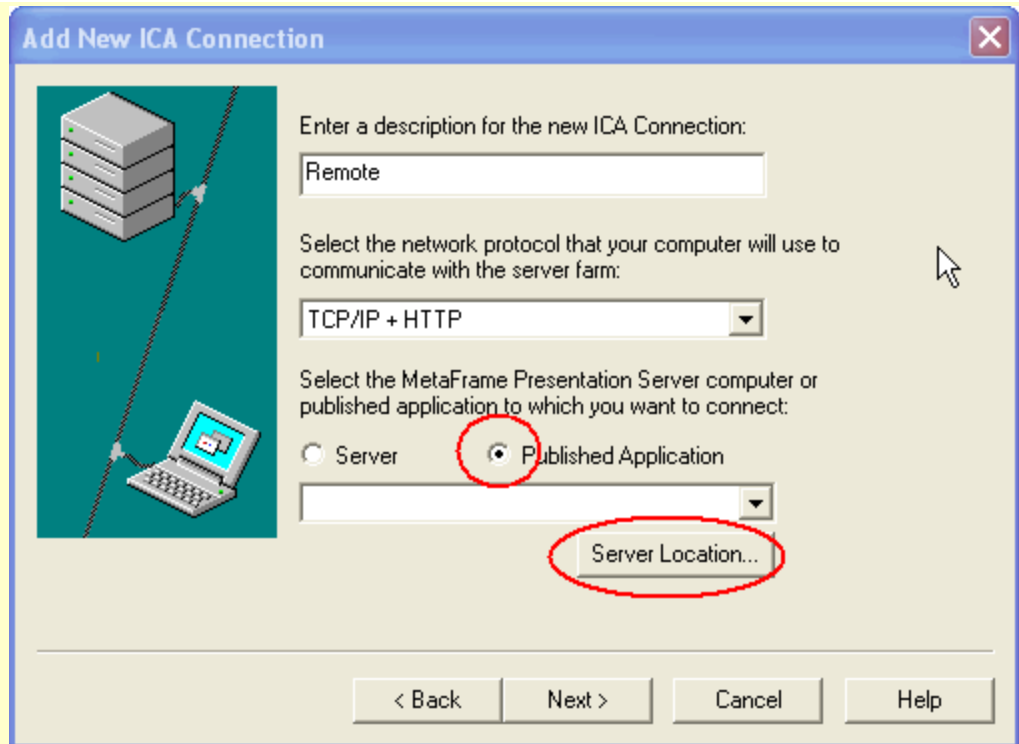
Double-click **Add ICA Connection** to begin new connection wizard...



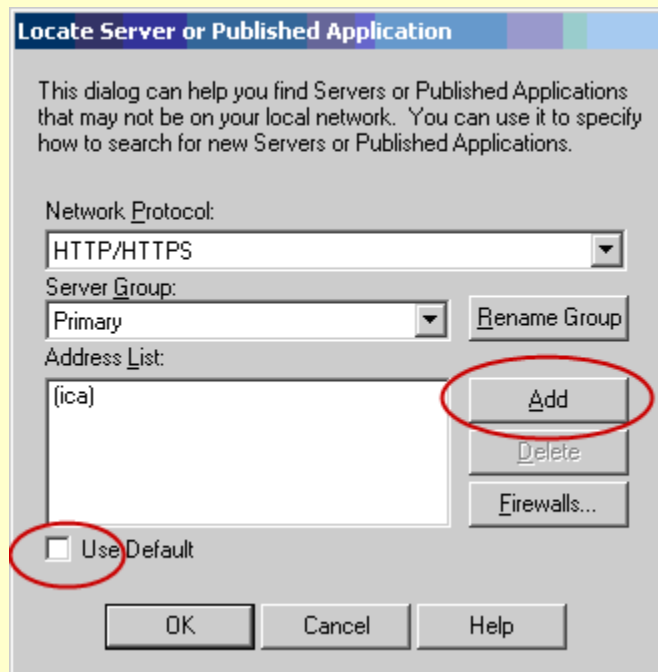
From the drop-down menu select **Wide Area Network** and click Next...



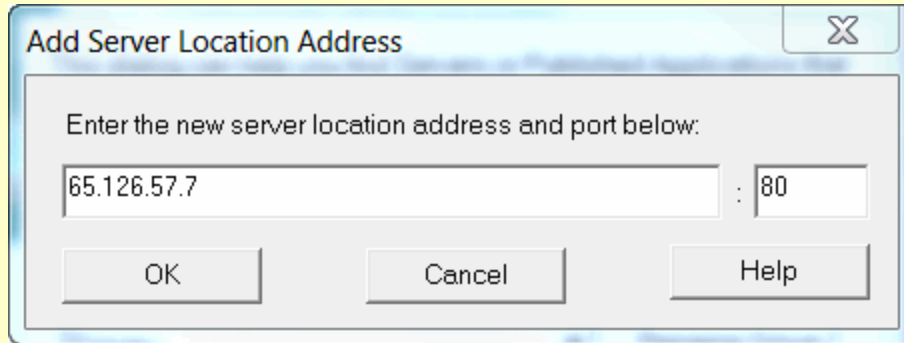
Enter a description in the top field
Leave the middle field as-is
For the third field check **Published Applications** and click the **Server Location** button...



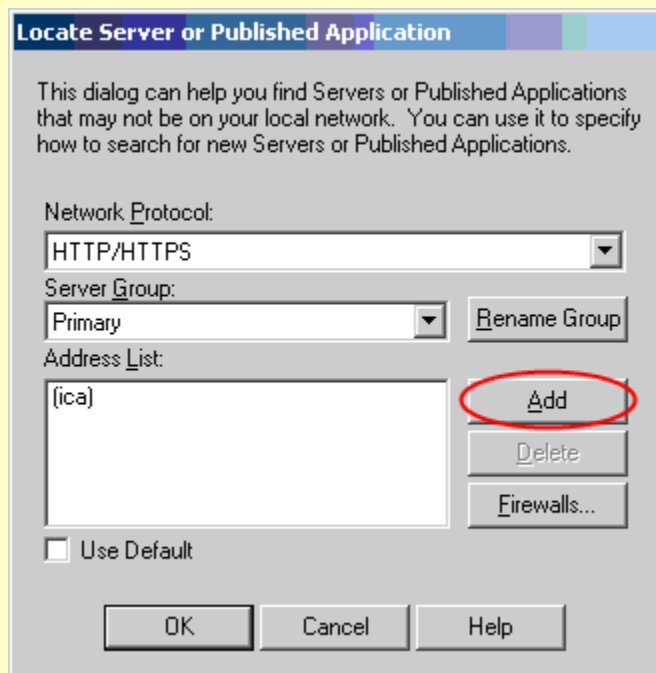
When this box opens up, uncheck the **Use Default** check box and click the **Add** button...



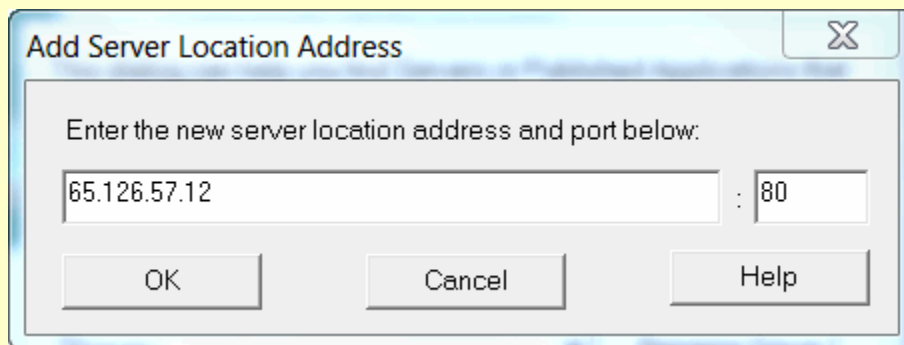
Type in the address as shown below including the dots: **65.126.57.7** and click **OK**...



Click the **Add** button again...



Enter the second address **65.126.57.12** and click OK...



Now Click the **Firewalls...** button...

Locate Server or Published Application

This dialog can help you find Servers or Published Applications that may not be on your local network. You can use it to specify how to search for new Servers or Published Applications.

Network Protocol:

HTTP/HTTPS

Server Group:

Primary

Rename Group

Address List:

65.126.57.7
65.126.57.12

Add

Delete

Firewalls...

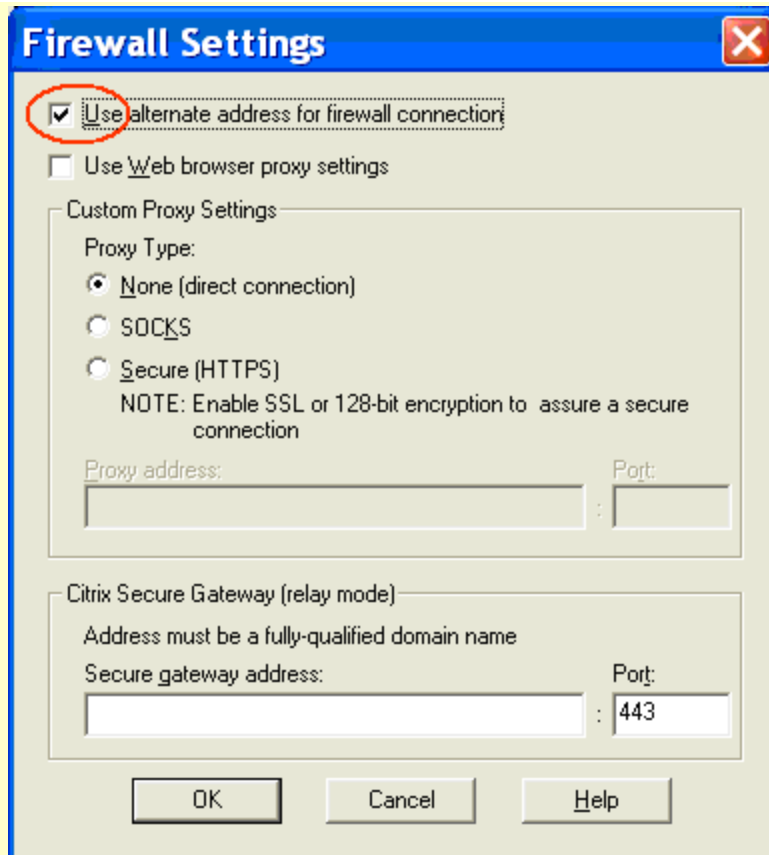
Use Default

OK

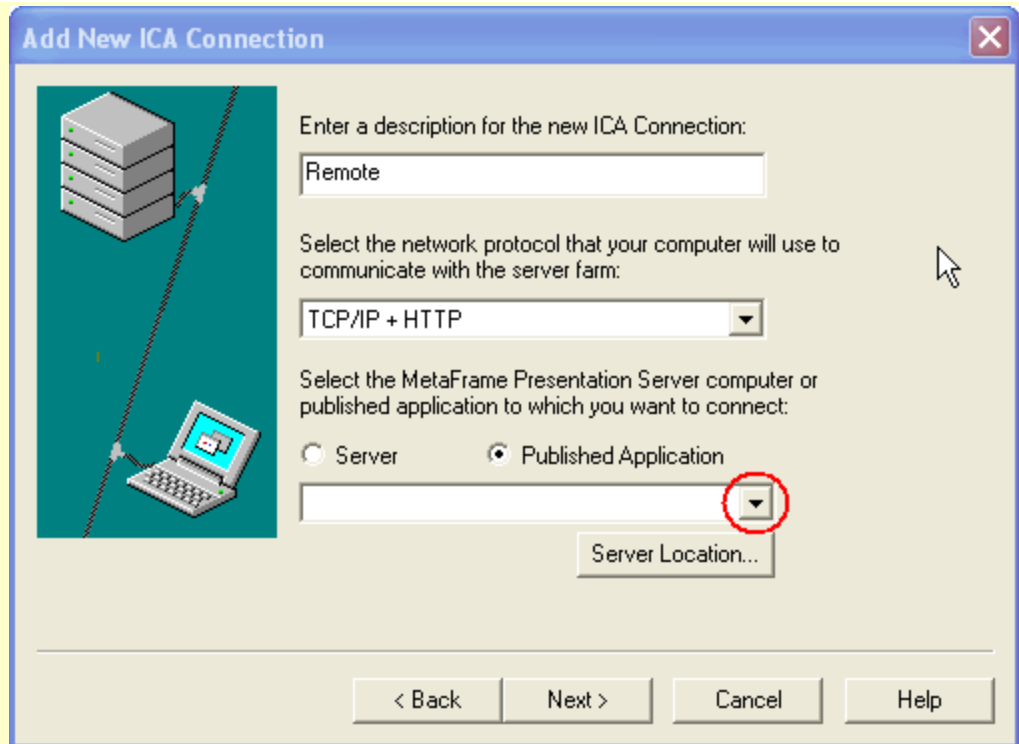
Cancel

Help

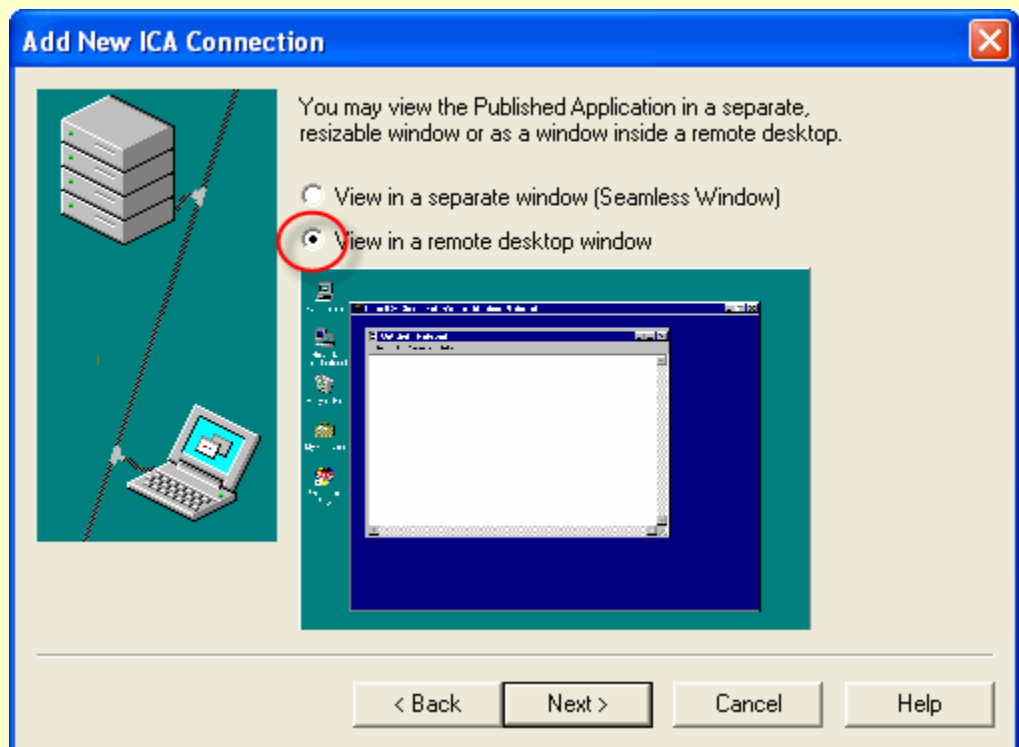
Check **Use alternate address for firewall connection** and click OK...



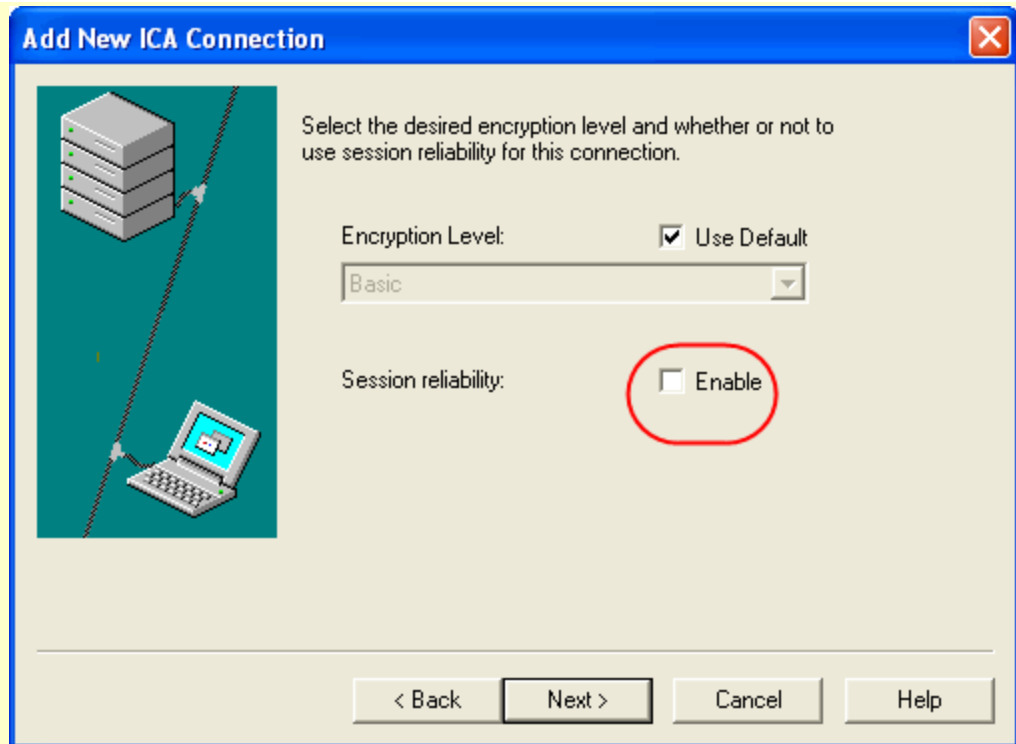
Click OK once more to return to the window below
Click on the down arrow and select **Desktop** (may take several seconds to populate). Click Next...



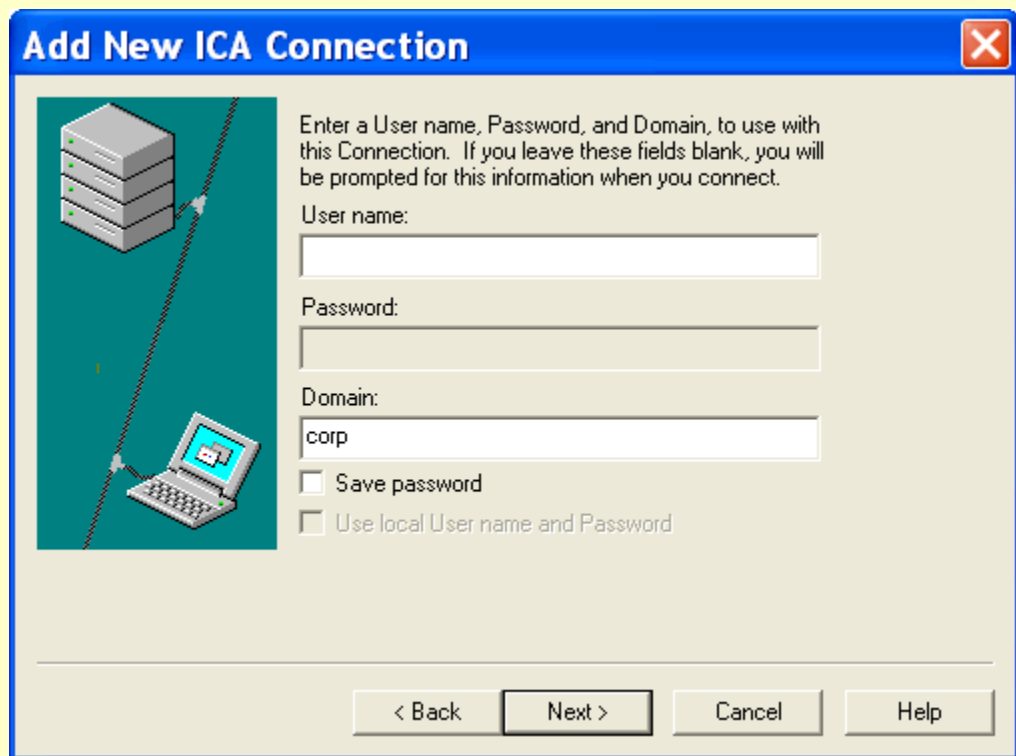
Select the second option here and click Next...



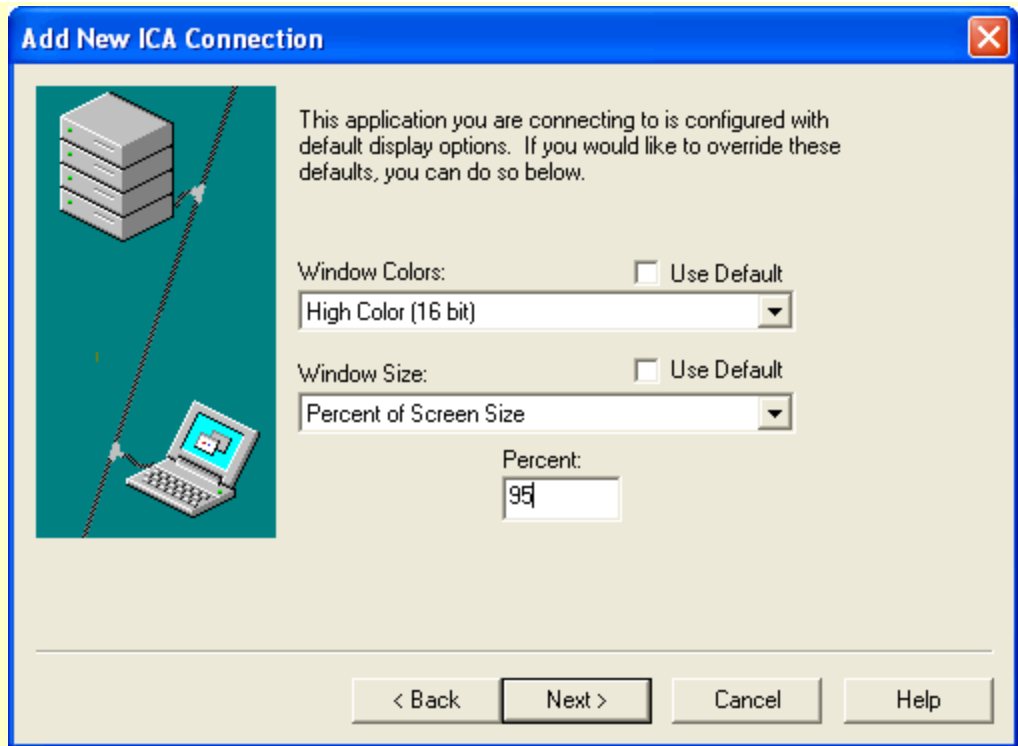
Uncheck **session reliability** and click Next...



Enter **hckent** in the Domain field and click Next...



Uncheck both options here and enter all fields as shown.



Click Next and Finish to complete your connection setup